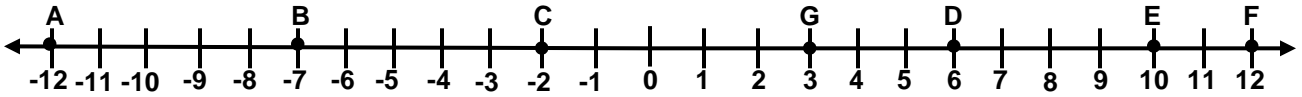


NAME _____ DATE _____ PER. _____

SEGMENTS & MIDPOINTS

Use the number line below to find the coordinate of the midpoint of each segment.



<p>1. \overline{AB}</p> <p>Midpoint: _____</p>	<p>2. \overline{CD}</p> <p>Midpoint: _____</p>
<p>3. \overline{AE}</p> <p>Midpoint: _____</p>	<p>4. \overline{GE}</p> <p>Midpoint: _____</p>

Find the coordinates of the of the midpoint of each segment formed by the given points.

<p>5. $(2, 4) \text{ \& } (-4, 4)$</p> <p>Midpoint: _____</p>	<p>6. $(-4, -4) \text{ \& } (4, -4)$</p> <p>Midpoint: _____</p>
--	--

Given the coordinate of one endpoint of \overline{AB} and its midpoint M , find the coordinates of the other endpoint.

<p>7. $A(0, 9), M(2, 5)$</p> <p>$B(\text{_____}, \text{_____})$</p>	<p>8. $B(4, 2), M(-2, 10)$</p> <p>$A(\text{_____}, \text{_____})$</p>
---	---

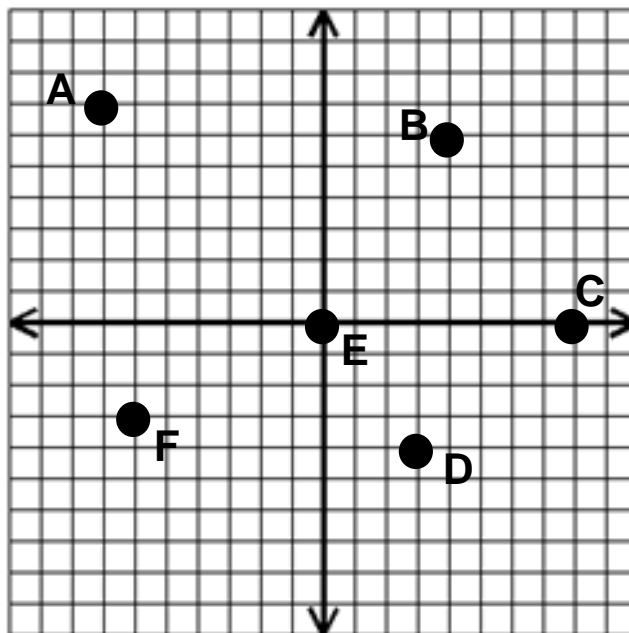
REVIEW: Find the correct answer for each of the following.

9. Find the distance between -10.5 and 7 on a number line.

$d =$ _____

10. If $A(-2, 10)$ and $B(4, -2)$, then $AB = ?$

$AB =$ _____



$AF =$ _____

$DE =$ _____

$BA =$ _____